

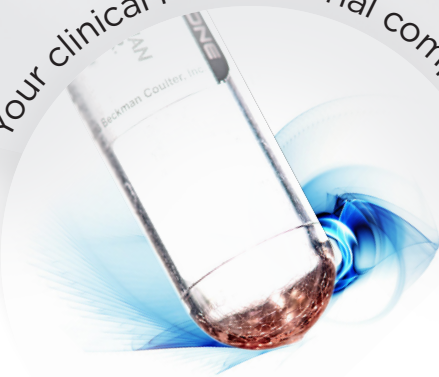


# DURACTIVE

BE CERTAIN ABOUT THE RESPONSE



Your clinical research trial companion



**VISUALIZE**  
*the possibilities.*

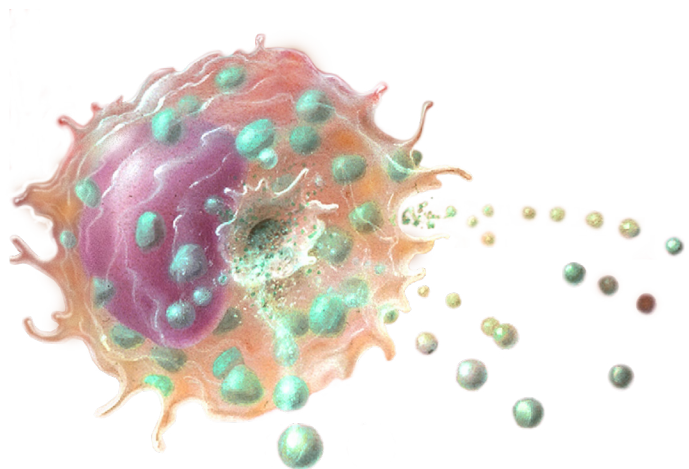
For Research Use Only - Not for use in Diagnostic procedures

 **BECKMAN  
COULTER**  
*Life Sciences*

# BE CERTAIN ABOUT THE RESPONSE

---

Functional assays such as induction of cytokine expression typically involve time-critical thawing of frozen stimulation cocktails and liquid handling of resulting small volumes. The DURActive stimulation kits eliminate freeze-storage and error-prone liquid handling as they are dry ready-to-use stimulation mixes in unitized 1-test-format, stable at room temperature.



DURActive dry stimulation mixes ensure reliability of the first crucial step in cellular activation assays before a precisely coordinated signaling cascade can yield its response.

# DURActive STIMULATION KITS

## Dry Stimulation Mixes for Immune Functional Assays

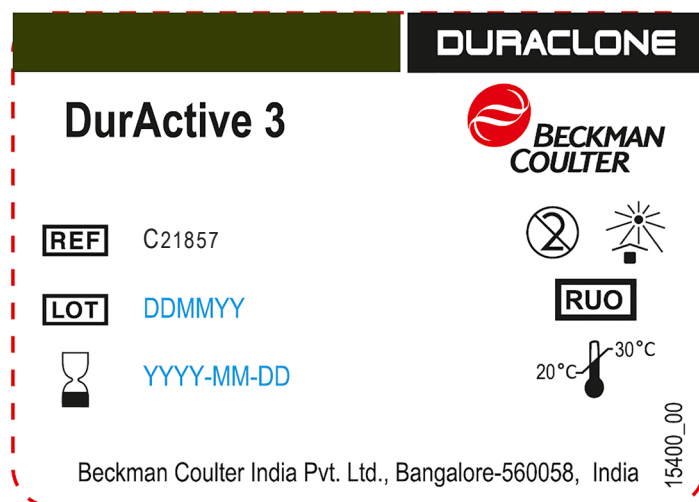
The DURActive stimulation kits contain optimally dosed physiologically active compounds provided as unitized single tests in 12x75 mm tube format.

- Pre-formulated mixes containing 2-3 active compounds
- Unitized dry Beckman Coulter proprietary format
- Expert-proven dosing
- 25 tests/package

	CONTAINED STIMULATING AGENTS	TESTED SAMPLE VOLUMES	ACTIVATION CHARACTERISTICS	MATCHING DURACLONE ANTIBODY PANEL
<b>DURActive 1</b> C11101 (25 tests, RUO)	PMA / Ionomycin / Brefeldin A	50 $\mu$ L heparinized whole blood  0.5x10 <sup>6</sup> PBMCs in 50 $\mu$ L suspension	Broad activation Inhibition of secretion	DURAClone IF T Activation (B88649) DURAClone IF T Helper Cell (C04666)
<b>DURActive 2</b> C11102 (25 tests, RUO)	PMA / Ionomycin		Broad activation	Detection of soluble compounds, DURAClone IF T Activation (B88649), DURAClone IF T Helper Cell (C04666) (using secretion inhibitors such as Monensin)
<b>DURActive 3</b> C21857 (25 tests, RUO)	LPS / Brefeldin A		Innate immune responses Inhibition of secretion	DURAClone IF Monocyte Activation (C21858)

# MAKE YOUR LABORATORY A SAFER PLACE

DURActive reaction tubes can be handled outside the laboratory hood and minimize the risk of biohazardous or chemical exposure. The unitized 1-test-tubes contain only non-hazardous amounts of the stimulating agents and are devoid of organic solvents.



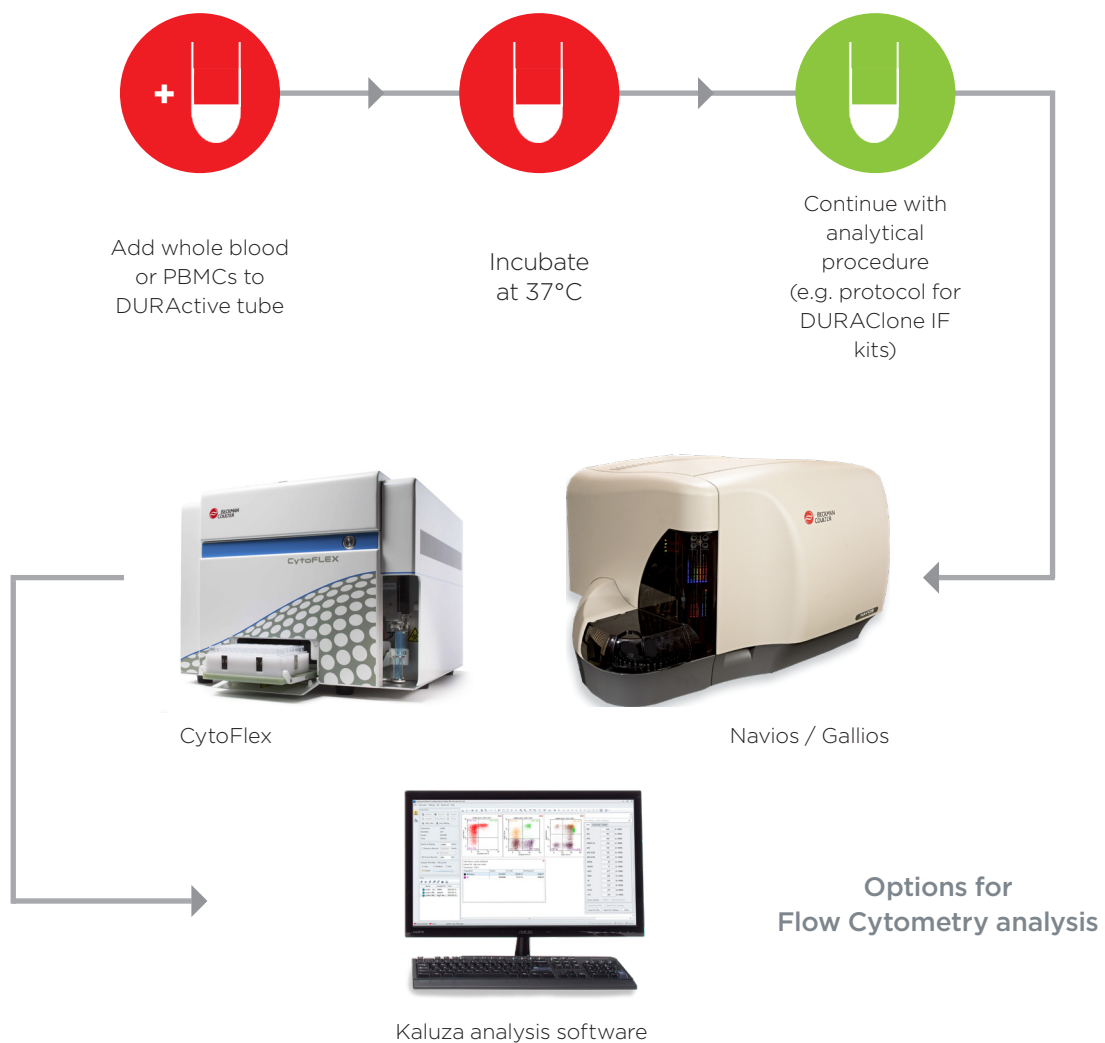
Each DURAClone tube is labeled with the complete product information.

# STREAMLINE YOUR WORKFLOW WITH DURActive

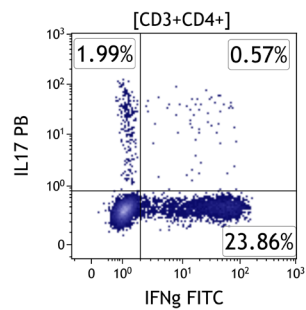
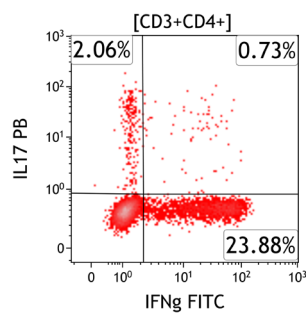
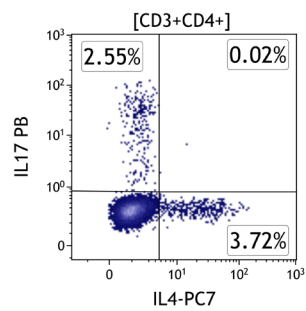
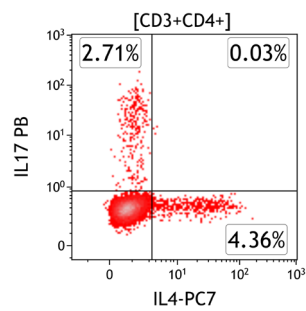
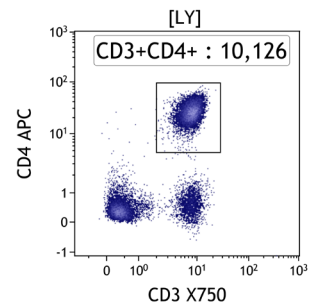
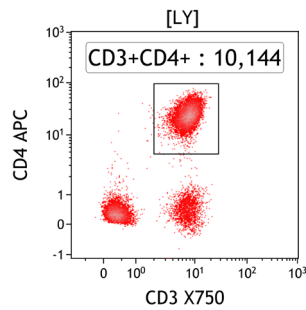
---

Every DURActive tube contains a layer with the dried-down stimulation mix. The avoidance of freezing, thawing and diluting prior to the functional assay as well as the elimination of stimulation mix pipetting during the experimental protocol make functional assays a lean procedure.

## Workflow for Stimulation Using DURActive



# DURActive MATCHES LIQUID STIMULATION



Comparison of cytokine expression as induced by  
DURActive 1 vs analogue liquid stimulation cocktail  
in identical whole blood samples



# ADVANCING FUNCTIONAL CYTOMETRY WITH DURActive, DURAClone IF & PerFix-nc

The DURAClone IF antibody panels reveal immune function at the single cell level utilizing a streamlined and simplified intracellular staining workflow.

Product	405 nm		488 nm					633 nm				Quality Standard
	PB	KrO	FITC	PE	ECD	PC5.5	PC7	APC	AF647	AF700	AF750	
IF T Activation B88649 (25 tests RUO)	CD4	-	IFN $\gamma$	TNF $\alpha$	-	-	IL-2	-		CD8	CD3	GMP
IF T Helper Cell C04666 (25 tests RUO)	IL-17A	-	IFN $\gamma$	-	-	-	IL-4	CD4		-	CD3	
<i>New!</i> IF Monocytes Activation C21858 (25 tests RUO)	CD14	CD45	-	HLA-DR	-	-	-	-		TNF $\alpha$	-	
<i>New!</i> IF Basophil Activation C23406 (25 tests RUO)	CD63	CD45	-	CD203c	-	-	CD3	-	CD294 (CRTH2)	-	-	

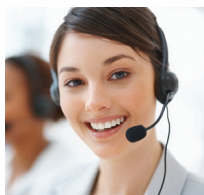
DURAClone IF kits that include intracellular antigens are optimized for use with the PerFix-nc kit (B31167 and B31168) allowing for staining of surface and intracellular antigens in a single step.



- (1) PB: Pacific Blue\*
- (2) KrO: Krome Orange
- (3) AF700: Alexa Fluor\* 700
- (4) AF750: Alexa Fluor\* 750

## Choose Beckman Coulter for Benchmark Expertise and Innovation

For over 80 years Beckman Coulter has driven innovation. We remain committed to shaping flow cytometry technology to fit seamlessly into your lab's workflow and to provide an optimal user experience. When you choose a Beckman Coulter solution you receive the high level of expertise, innovation, and quality assurance.



Contact your local Beckman Coulter sales representative.



or visit <http://beckman.com/reagents/coulter-flow-cytometry/antibodies-and-kits/DURAClone-panels>



© 2018 Beckman Coulter, Inc. All rights reserved. Beckman Coulter, the stylized logo, and the Beckman Coulter product and service marks mentioned herein are trademarks or registered trademarks of Beckman Coulter, Inc. in the United States and other countries. \* Alexa Fluor and Pacific Blue are registered trademarks of Molecular Probes, Inc.

For Beckman Coulter's worldwide office locations and phone numbers, please visit "Contact Us" at [beckman.com](http://beckman.com)

FLOW-3837SB06.18